



Route 146 Corridor Management Plan

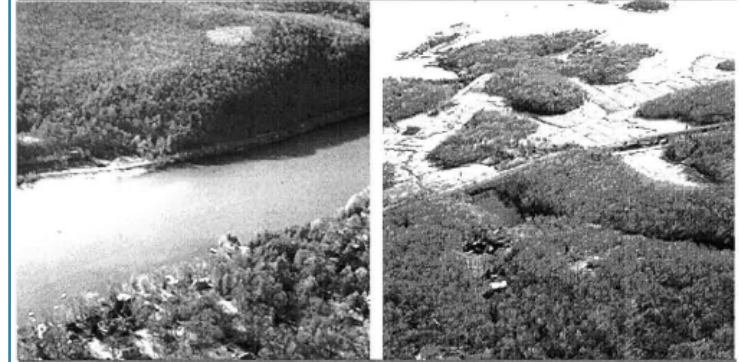
CORRIDOR WORK GROUP KICKOFF MEETING
BRANFORD FIRE HEADQUARTERS
45 NORTH MAIN STREET
BRANFORD, CT 06405

January 24, 2023, 3:30 pm



From the Mountains to the Sea

ROUTES 77 AND 146 CORRIDOR MANAGEMENT PLAN



prepared for:

**The Route 77 and 146 Scenic Road Advisory Committee and
The Connecticut Department of Transportation**



Corridor Working Group (CWG) Kickoff Meeting Agenda

- Welcome and Introductions
 - Opening Remarks
- Background: Route 146
- Route 146 Corridor Management Plan (CMP)
 - Outline
 - Public Involvement
 - Project Schedule
- Purpose of Corridor Working Group
 - CMP Framework
 - Outline of Future Meetings
- Open Discussion



Corridor Working Group Members

CTDOT

Patrick Zapatka, Project Manager

Robert Bell, **Corridor Working Group Chair**, Bureau of Policy & Planning

David Elder, Bureau of Policy & Planning and State Scenic Road Advisory Committee

Allan Dodge, CTDOT District 3

Michael Calabrese, Bureau of Engineering & Construction

BRANFORD

John Hoefflerle, Town Engineer

Barbara Ricozzi, Branford Resident

Matt Radulski, Branford Historical Society

GUILFORD

Janice Plaziak, Town Engineer (Alternate: **Michael Ciacciarella**, Asst. Town Engineer)

Bob Yaro, Guilford Resident

Shirley Gironi, Guilford Preservation Alliance

Other Agencies:

Laura Francis, South Central Regional Council of Governments

Bill Sigmund, CT Department of Energy and Environmental Protection

Catherine Labadia, CT State Historic Preservation Office

Sandy Fry, CT Bicycle & Pedestrian Advisory Board

VHB Staff:

Daniel Amstutz, Joe Balskus



CTDOT Opening Remarks

Route 146 Corridor - Branford



Route 146 Corridor - Guilford

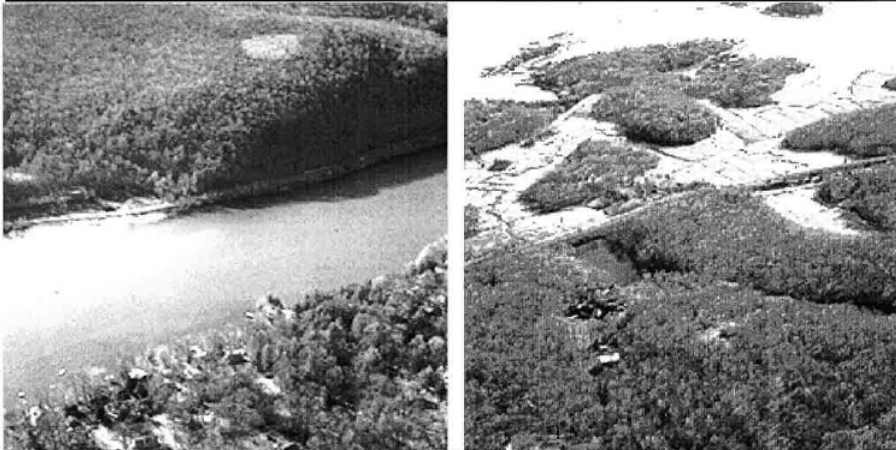


Route 146 Background

- Original 1996 Corridor Management Plan for Route 146 & 77
- Vision to focus on Preservation
 - Landscapes, open spaces
 - Reduce impact of development
 - Lower traffic speeds
 - Improve bike/pedestrian access

From the Mountains to the Sea

ROUTES 77 AND 146 CORRIDOR MANAGEMENT PLAN



prepared for:

**The Route 77 and 146 Scenic Road Advisory Committee and
The Connecticut Department of Transportation**



Previous Corridor Study Overview

- Evaluate existing conditions for roadway, amenities and land use, evaluate impacts of roadway flooding and sea level rise, traffic calming, future development, traffic volumes, historic and scenic impacts, evacuation routes and possible alternate scenarios.
From SCRCOG RFQ May 2019
- 13 Mile Coastal Roadway, 8.6 Branford/4.4 Guilford



Route 146 Corridor Existing Conditions Overview

- Designated State Scenic Roadway for nearly All 13 miles, serving several National Register Historic Districts
- Varying land uses – residential mostly in coastal section, with a rural character of roadway and undulating curves throughout
- Nominal 24' wide, with limited shoulders in sections
- Traffic volumes:
 - 11,500 Average Daily Traffic - Branford, south of Meadow Street
 - 6,300 Average Daily Traffic - Guilford, east of Pearl Street
- State-Designated Bike Route (western section only)
- Parallels/Crosses Amtrak High Speed Railroad and Private Rail
 - 4 Railroad Under/Overpasses and 2 At-Grade Crossings
- Recurring flooding issues along several sections of roadway

CMP Project Goals



Increased Safety



Involve the Community



Protect Natural and Cultural Resources



Improve Bike and Pedestrian Access



Climate and Sea Level Preparedness



Preserve Intrinsic Qualities



Maintain Infrastructure



Establish Working Group



Balance Needs and Requirements



Route 146 Corridor Management Plan Outline

- Existing Conditions Update
- Community Involvement
- Context Sensitive Design
- Coastal Flooding and Resiliency Assessment
- Future Strategies
- Document Format

Route 146 Corridor Management Plan Outline

- Existing Conditions Update
 - a) Field data collection, projects and other developments
 - b) Safety and crash data
 - c) Land use and zoning changes (if applicable)
 - d) Historic resources
 - e) Wetlands
 - f) Roadside development
 - g) Changes to scenic highway aesthetics
 - h) Traffic counts
 - i) Flood risk

Route 146 Corridor Management Plan Outline

- Community Involvement
 - Public Involvement Plan (submitted to CTDOT for review)
 - Study website
 - Corridor Working Group (CWG) – 6 meetings
 - Public Survey
 - Public Information Meetings – 4 meetings
 - Municipal Coordination – 2 meetings with Branford and Guilford
 - Stakeholder Focus Group meetings
 - Corridor Field Walks
 - Corridor Management Plan Framework



2019 Jane Jacobs Award for Outstanding Public Process for the Kelley Square Roundabout



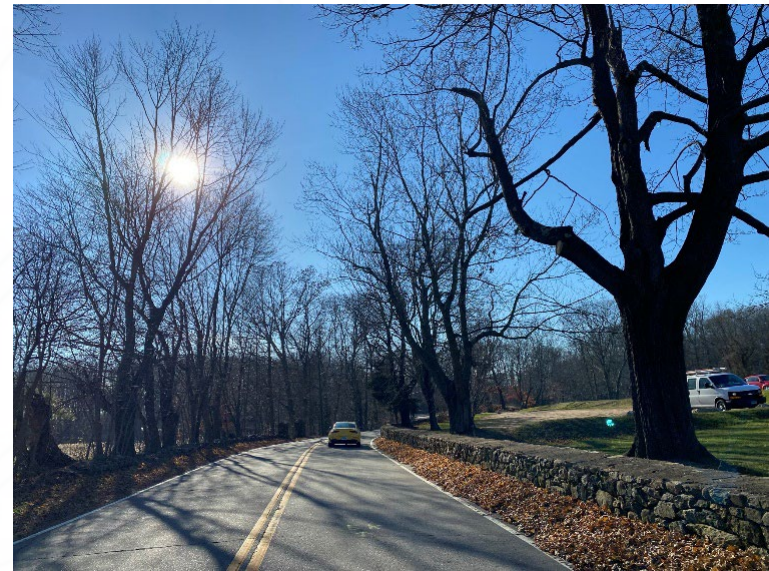
Route 146 Corridor Management Plan Outline

- Context Sensitive Design for Roadway Infrastructure
 - Structures
 - Drainage/Stormwater
 - Roadway
 - Signing
 - Compliance to Standards
 - Bicycle and Pedestrian
 - Commercial Traffic
- Coastal Flooding and Resiliency Assessment
 - Projections/Sea Level Rise
 - Impacts to Infrastructure



Route 146 Corridor Management Plan Outline

- Future Strategies
 - Development of short term and 20 year beyond strategies
 - Preservation of Corridor
 - Context Standards
 - Roadside development
- Corridor Management Plan Expected format:
 - Statement of purpose and need
 - Executive summary
 - Introduction
 - Existing Conditions Update
 - Assessment
 - Coastal Analysis
 - Strategic Framework and Strategies
 - 20 Year Plan



Route 146 CMP Schedule

- **Winter/Spring 2023** – Update Existing Conditions, Data Collection, Community Outreach
- **Summer 2023** – Develop Context-Sensitive Design Approaches, Updated Flood Risk
- **Fall 2023** – Additional Community Outreach, Future Strategies Development
- **Winter/Spring 2024** – Finalize Corridor Management Plan

Purpose of Corridor Working Group

- Guide the CMP process
- Guide development of CMP Framework
- Evaluate context-sensitive approaches
- Feedback on deliverables and project approach
- Identify possible stakeholders for focus groups
- Participate in Corridor Field Walks
- Promote public engagement opportunities

Route 146 Corridor Management Plan Potential Framework



Federal Highway Administration 14 Elements of a CMP

1. Corridor Mapping
2. Assessment of intrinsic qualities and context of the areas along the corridor
3. Strategy for maintaining and enhancing the scenic highway qualities
4. Stakeholders involved with implementing the CMP
5. Strategy for enhancing existing development and accommodating new development
6. Ongoing public involvement in the implementation of the CMP
7. Corridor Safety Analysis
8. Accommodating commercial traffic while ensuring safety of other users
9. Minimize intrusions to scenic highway aesthetics
10. Roadside features compliance with state and federal requirements on outdoor advertising
11. Roadway signing review and signage plan
12. Marketing of the Byway
13. Context sensitive design standards for roadway modifications
14. Scenic Byway interpretation

Route 146 Corridor Management Plan Potential Framework



Federal Highway Administration 14 Elements of a CMP

1. Corridor Mapping
2. Assessment of intrinsic qualities and context of the areas along the corridor
3. Strategy for maintaining and enhancing the scenic highway qualities
4. Stakeholders involved with implementing the CMP
5. Strategy for enhancing existing development and accommodating new development
6. Ongoing public involvement in the implementation of the CMP
7. Corridor Safety Analysis
8. Accommodating commercial traffic while ensuring safety of other users
9. Minimize intrusions to scenic highway aesthetics
10. Roadside features compliance with state and federal requirements on outdoor advertising
11. Roadway signing review and signage plan
12. ~~Marketing of the Byway~~
13. Context sensitive design standards for roadway modifications
14. ~~Scenic Byway interpretation~~

Route 146 Corridor Management Plan Potential Framework



Federal Highway Administration 14 Elements of a CMP

1. Corridor Mapping
2. Assessment of intrinsic qualities and context of the areas along the corridor
3. Strategy for maintaining and enhancing the scenic highway qualities
4. Stakeholders involved with implementing the CMP
5. Strategy for enhancing existing development and accommodating new development
6. Ongoing public involvement in the implementation of the CMP
7. Corridor Safety Analysis
8. Accommodating commercial traffic while ensuring safety of other users
9. Minimize intrusions to scenic highway aesthetics
10. Roadside features compliance with state and federal requirements on outdoor advertising
11. Roadway signing review and signage plan
12. Context sensitive design standards for roadway modifications
13. Coastal Flooding and Resiliency

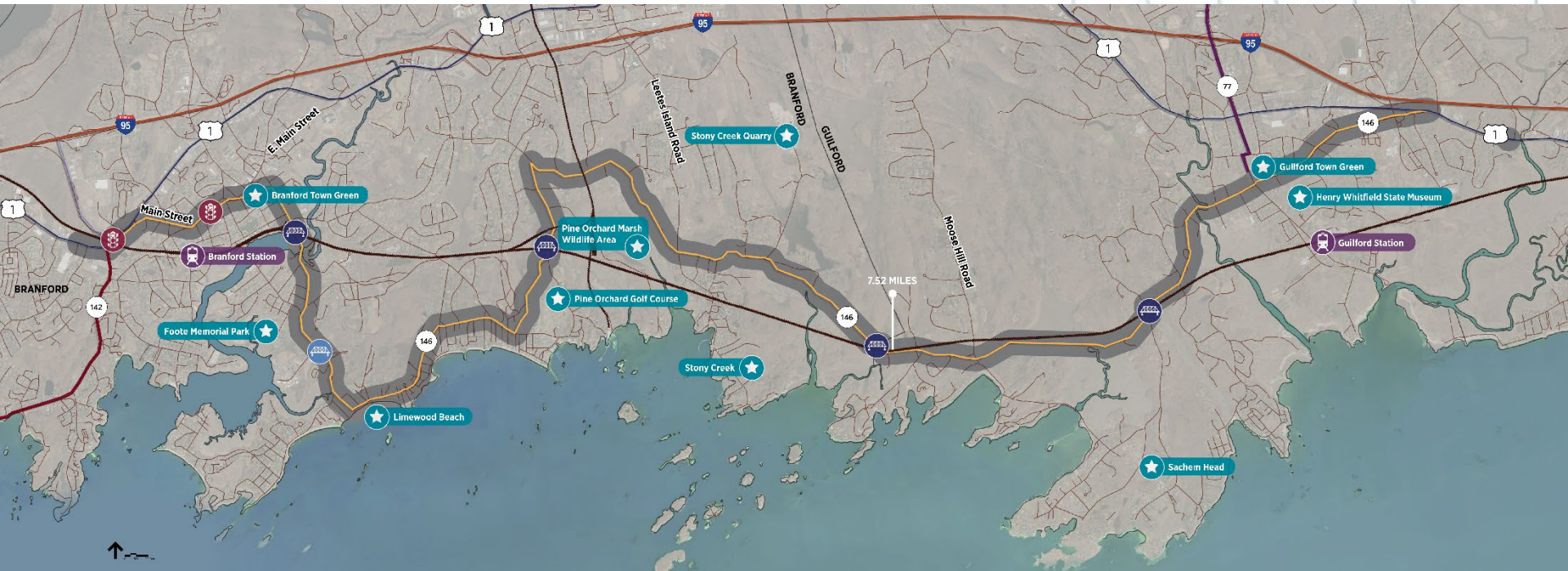
CWGW : Next Steps

- Corridor Working Group next meeting:
Topics for Discussion
 - Existing Conditions Update
 - Potential Assignments
 - CMP Framework Development
 - Ideas on approaching deliverables/tasks
 - Identify Stakeholders
 - Corridor Field Walk potential dates



CMP Next Steps

- Project Website Launch: End of January
- Updated Existing Conditions Report: Mid-February
- Corridor Working Group next meeting: Early March 2023
- Public Information Meeting: Late March 2023



Draft Route 146 CMP Website



Route 146 CORRIDOR MANAGEMENT PLAN

[Home](#)

[CMP Process](#)

[Get Involved](#)

[Documents](#)

[Team](#)

[FAQ](#)

PLANNING FOR THE FUTURE

Route 146 Corridor in Branford and Guilford, CT



Questions?

